

Fees will be paid on a lump sum price basis for services rendered under this scope of work in accordance with submitted price quotes. No additional compensation for travel and mileage to or from the pump station shall be billed.

Work performed by the Contractor under this scope of service could be subject to inspection and testing by GCSD. Any work found to be defective or unsatisfactory shall be repaired or replaced by the Contractor at the Contractor's expense.

Bid Form:

In response to this Request for Quotations (RFQ), the undersigned, as Bidder, declares that Bidder will contract with GCSD, to provide all necessary materials, and furnish the specified requirements in this RFQ, in the manner herein prescribed and at the prices stated in the following Bid Form:

Item	Description & Bid Item	Price
1	Pump Removal/Installation, and Transport to/from Contractor's facility	\$ 5,558.00
2	Pump Disassembly and Inspection	\$ 1,360.00
3	Preparation of detailed rehabilitation report	\$ 680.00
4	Pump Installation, and Transport from Contractor's facility	\$ 6,868.00
Total Base Price		
5	Unit cost for Refurbishment/Replacement Components (as needed)	
6	Column Pipe	\$ 735.00
7	Line Shaft Complete Assembly	\$ 805.00
8	Line Shaft Coupling	\$ 31.00
9	Line Shaft Bearing	\$ 77.00
10	Spider	\$ 20.00
11	Bowl Assembly	\$19,968.00
12	Strainer	\$ 525.00
13	Motor Refurbishment	\$9,450.00
14	Stuffing Box Assembly	\$ 996.00

Pump Data Sheet - Turbine 60 Hz

Company: Don Pedro Pump
 Name: Groveland Comm - Big Creek Pump
 Date: 01/30/2019

Customer:



Pump:		
Size:	14RJLC (stages: 9)	Dimensions:
Type:	Lineshaft	Suction: ---
Synch Speed:	1800 rpm	Discharge: ---
Dia:	9.5 in	<u>Vertical Turbine:</u>
Curve:	E6614REPC1	Eye Area:
		Bowl Size: 13.6 in
		Max Lateral: 1.25 in
		Thrust K Factor: 16.2 lb/ft

Fluid:		
Name:	Water	
SG:	1	Vapor Pressure: 0.256 psi a
Density:	62.4 lb/ft ³	Atm Pressure: 14.7 psi a
Viscosity:	1.1 cP	
Temperature:	60 °F	

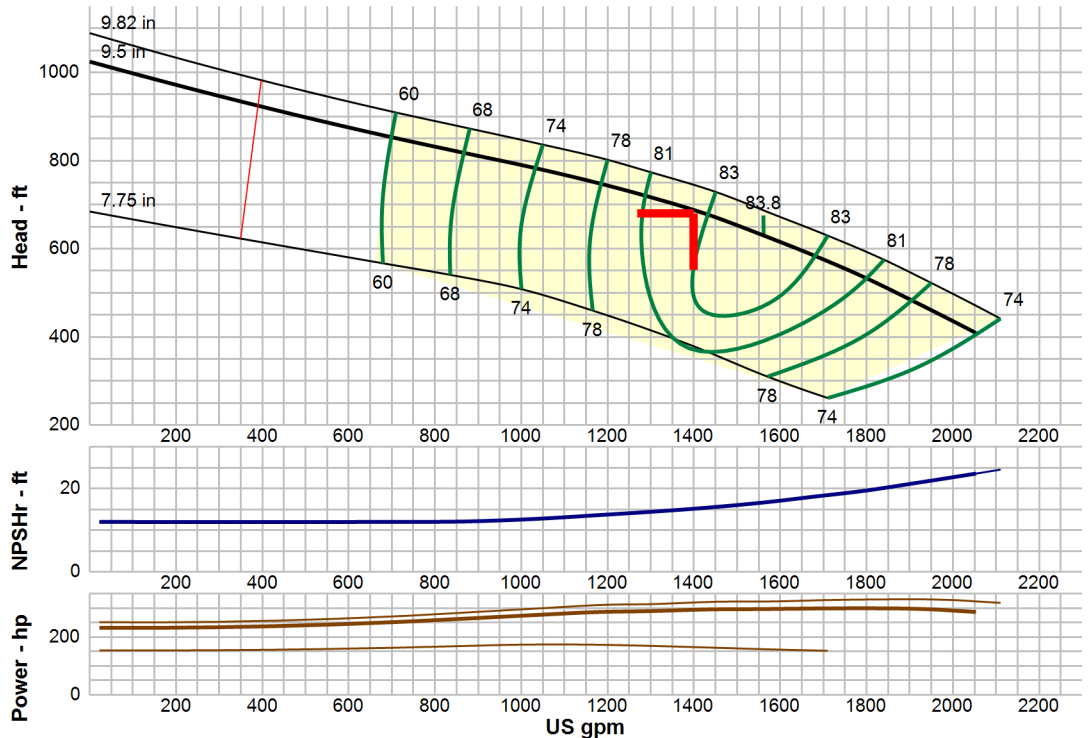
Search Criteria:		
Flow:	1400 US gpm	Near Miss: ---
Head:	680 ft	Static Head: 0 ft

Pump Limits:		
Temperature:	---	Sphere Size: 1.06 in
Wkg Pressure:	---	

Motor:		
Standard:	NEMA	Size: 300 hp
Enclosure:	WPI	Speed: 1800 rpm
Frame:	5006	
Sizing Criteria:	Max Power on Design Curve	

Pump Selection Warnings:
 None

--- Duty Point ---	
Flow:	1400 US gpm
Head:	687 ft
Eff:	82.6%
Power:	294 hp
NPSHr:	15.2 ft
Speed:	1770 rpm
--- Design Curve ---	
Shutoff Head:	1025 ft
Shutoff dP:	444 psi
Min Flow:	390 US gpm
BEP:	83.8% @ 1562 US gpm
NOL Power:	299 hp @ 1800 US gpm
--- Max Curve ---	
Max Power:	330 hp @ 1841 US gpm



Discharge Sizes-8in,10in,12in. Curves are certified for water at 60°F only. Consult factory for performance with any other fluid.

Performance Evaluation:						
Flow	Speed	Head	Efficiency	Power	NPSHr	
US gpm	rpm	ft	%	hp	ft	
1680	1770	584	83	298	18.1	
1400	1770	687	82.6	294	15.2	
1120	1770	762	76.3	282	13.2	
840	1770	823	66.7	261	12.1	
560	1770	887	48.2	247	12	