

CERT Groveland/Big Oak Flat/Moccasin

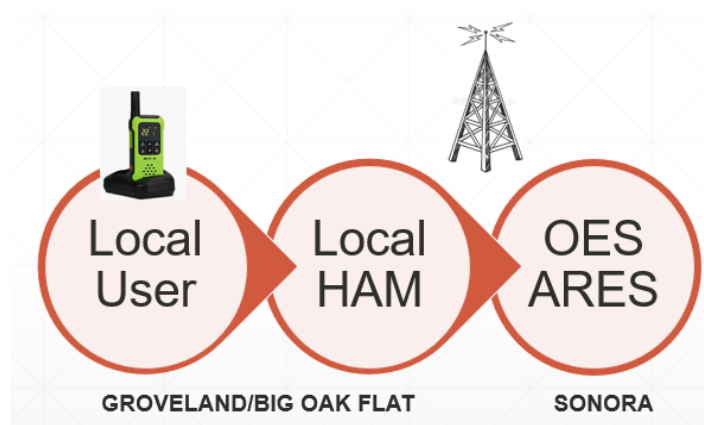
Groveland Community Services District • 18966 Ferretti Road, Groveland CA 95321



Groveland, California

Report to GCSO Board for December 2022

- GCERT has 25 participants, 21 more interested people and 12 fully certified members. GCERT participants take the FEMA Hybrid CERT training (online + last unit in person).
- GCERT has notified FD that our Firefighter Rehab vehicle is operational. It has been outfit with all the necessary equipment to Go Live. (Funded by Adventist Health Grant) GCERT is also available for Traffic Control deployment.
- GCERT had 6 candidates in the TC-OES CERT sponsored training session Nov 18-20 at the TC Emergency Operations Center on Striker Court. Len Otley is our Training Officer. The next training is in Mar/April
- GCERT assisted the PMLA Safety Committee in developing evacuation maps for PML and the Greater Groveland area. These are ready to publish on websites.
- GCERT will be working with GCSO management to develop deployment protocols.
- Groveland CERT will partner with the Pine Mountain Lake Safety Committee to offer a Fire Preparedness Workshop in Q1. Between the 3 workshops in 2022, nearly 100 local folk have participated.
- The GrovelandNET is a community radio communications network utilizing FRS radios. These are about \$30 each, require no license, would be in general use throughout Groveland/BOF. Additionally, a few GMRS would be used to communicate outside the area on to Sonora OES using repeaters. These are more expensive, require a license & training. GCSO would implement a Base Station.



12/8/2022 11:43 AM

GrovelandCERT@gmail.com

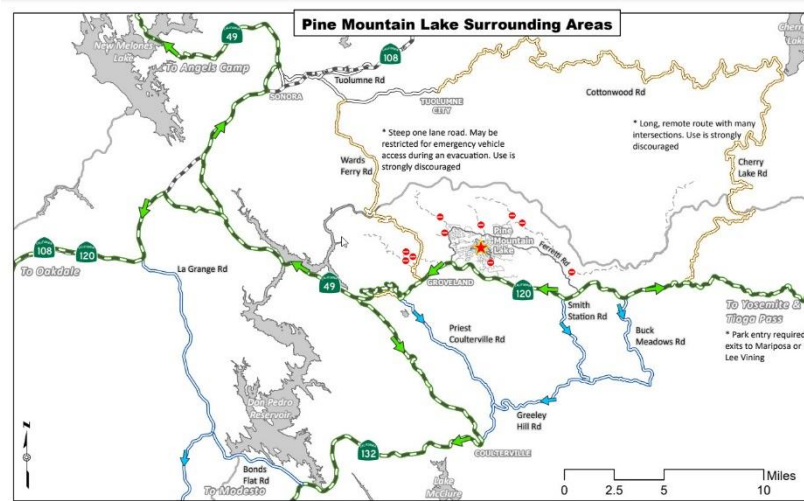
FB – CERT – Groveland Area Community Emergency Response Team
ND – CERT – Groveland Area Community Emergency Response Team

CERT Groveland/Big Oak Flat/Moccasin

Groveland Community Services District • 18966 Ferretti Road, Groveland CA 95321



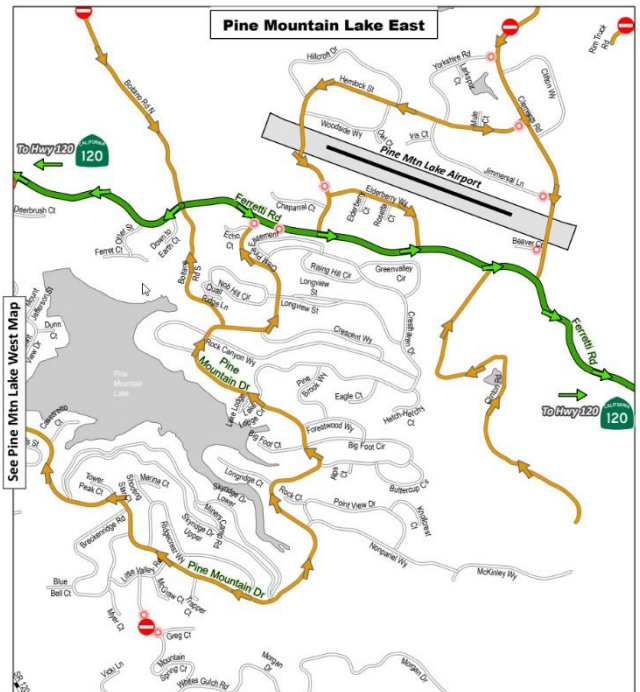
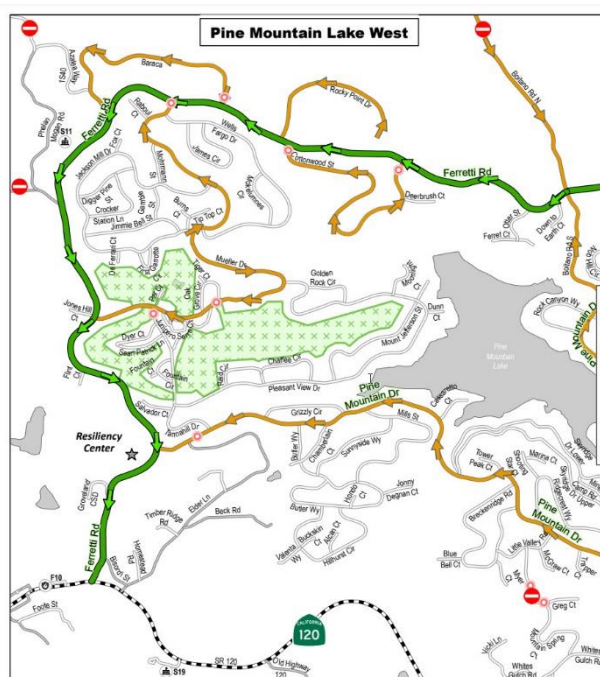
Groveland, California



- Exit Routes from Pine Mountain Lake**
- Primary (Green line)
 - Secondary (Blue line)
 - Not Recommended (Yellow line)
- Pine Mountain Lake**
- You Are Here (Red star)
 - Dead End - Not a through road (Red circle with slash)
- Preferred exit route**
Larger secondary roads. Use to reach highways
Viable routes on small roads with poor conditions. Avoid if possible

In an evacuation, use Ferretti Rd to reach Highway 120 and proceed to your destination. Use highways if possible, and follow secondary routes if necessary. Do not use alternate routes unless directed by law enforcement, or absolutely necessary.

This map is for emergency planning purposes. It is your responsibility to ensure your own safety - study your routes ahead of time, do not take unfamiliar roads, and follow all directions from Law Enforcement



12/8/2022 11:43 AM

GrovelandCERT@gmail.com

FB – CERT – Groveland Area Community Emergency Response Team
 ND – CERT – Groveland Area Community Emergency Response Team