



Information Provided By

O&M Manager: Luis Melchor
 Operations Supervisor: Greg Dunn
 Maintenance Supervisor: Andrew Klein
 Administration Services Technician: Rachel Pearlman
 Utility Billing Specialist: Meghan Atkins

**Operations and Maintenance Report
 January 2024**

Operations Department

Wastewater Treatment Division

Influent Totals	
Total	3.50
Average	0.11
High	0.16
Low	0.07

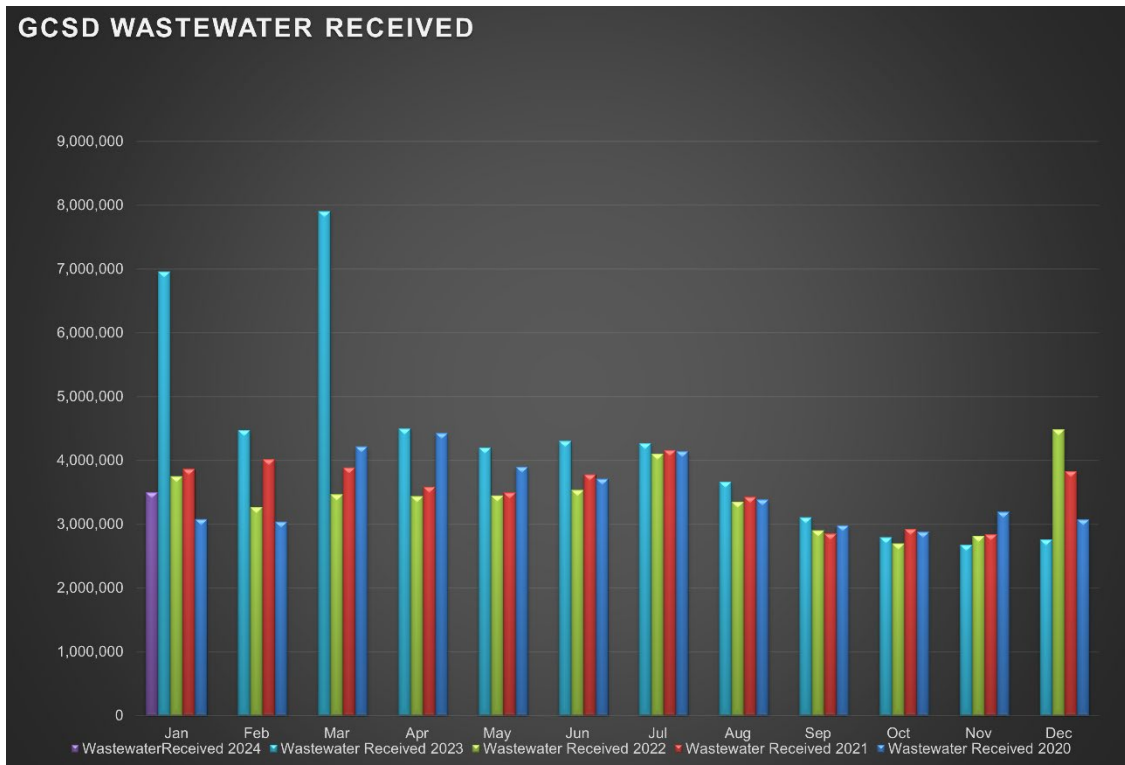
Effluent Totals	
Total	3.63
Average	0.12
High	0.20
Low	0.06

Reclamation Totals	
PML	
Spray Fields	
PML Season Total	
Spray Field Season Total	

Wasting Totals	
Total Inches	229
Total Pounds	4774
Active Accounts	1569

STP Rainfall Totals by Year During Current Month (Inches)					
Season	2023	2022	2021	2020	2019
	13.39	20.45	0.00	9.36	15.41
	High 1.50	High 3.01	High 0.00	High 3.86	High 1.95

Charted Historical Monthly Influent Totals



Wastewater Treatment Division

Routine Tasks

- Took weekly Bac-Ts and BOD of the Chlorine Contact Chamber (CCC) and sent into Alpha Lab for testing.
- Completed monthly Wastewater Report and sent to the State Water Resources Control Board
- Completed daily rounds and Lab.

Water Treatment Division

Routine Tasks

- Submitted monthly Water Treatment Report to State Water Resources Control Board
- Submitted monthly Conservation Report to State Water Boards
- Performed weekly checks and calibrations on all analyzers at 2G, BC, and AWS
- Performed monthly UV calibrations at 2G and BC.
- Took weekly Treatment Plant samples and sent them into Alpha Lab
- Monitored/sampled Distribution Tanks as needed.

Maintenance Department

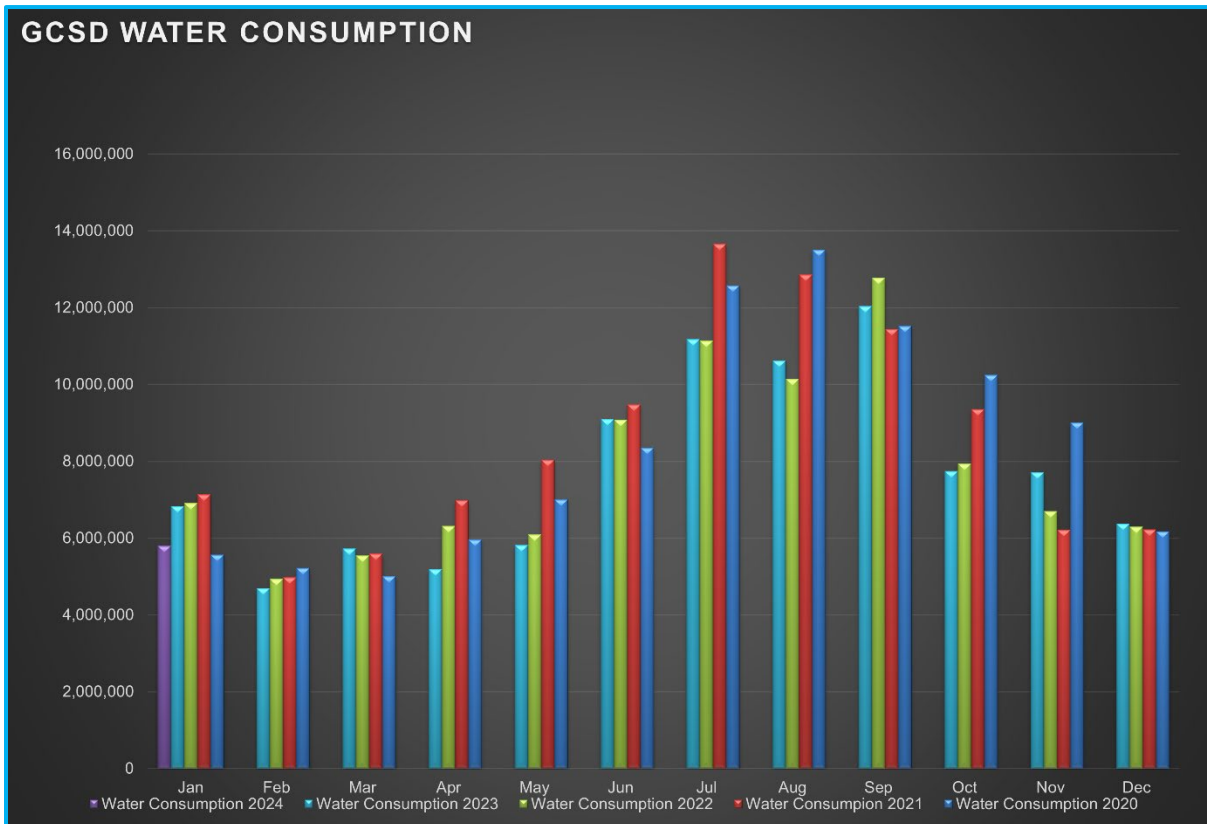
Water Distribution System Division

Meter Related Services	Total
Check / Repair Meters	24
Water Meters Installed	2
Monthly Meter Restrictions	0
Meter Lock offs	13
Meter Changeouts	0
Tenant Final Reads	0
Re-Reads	28
Meter Turn-Offs	2
Meter Turn-Ons	12
Meter Tests	69
Winterize Meter	5
Color/Taste/Odor/PSI Complaints	0
Total Meter Related Issues	61

Billed Consumption (Gallons)	2023	2022	2021
Residential	5,522,266	6,408,823	6,552,088
Commercial	276,564	418,527	363,173
Total	5,798,830	6,827,350	6,915,261

Active Accounts	3273
------------------------	------

Charted Historical Monthly Water Consumption



Maintenance and Repair Data

Description	Total
Water Main Leaks / Repairs	0
Water Service Line Leaks / Repairs	0
Fire Hydrant Repairs / Replacements	0
Number of Hydrants Flushed	0
Number of Dead-Ends Flushed	1
Water Valves Exercised	7
GIS Points	0

Description	Gallons
Flushing for Water Quality	25,200
Water Loss Due to Leaks / Breaks	9,750

After-Hours Calls (Hours)				
Water	Sewer	Park	Other	Total
11	6	0	0	17

Maintenance and Repair

- **Routine Tasks**
 - Read all District Water Meters
 - Customer Service Calls (Low / High Pressures, No Water, Turn-Ons / Turn-Offs, Etc.)
 - Underground Service Alert (USA) Utility Marking Program
 - Weekly Pump Station Inspections at Tank 2, Tank 4, Tank 5 (Buildings, Tanks, Motors, Pumps, Drives, Communications, Generators, and Auxiliary Equipment)
 - Lock offs for non-payment.

- **Tanks and Pump Stations**
 - Clean gutters and secure to the eave at Highlands PS.
 - R&R Sump pump and replumb discharge piping at 2G vault.

- **Distribution System**
 - Replace mainline air relief valve (ARV) near Tank 1.
 - Water service line upgrade at Rivian Building (Paid for by Rivian).
 - Replace meter washers at 13080 Clements Rd and 19641 Cottonwood St.
 - Zero read meter verifications.
 - Leak Investigation – Found property side leak at U1/L483.
 - Begin water service line survey to identify Lead and Copper water service lines.

Pictures

Wastewater Collection System Division

Description	Total
Manholes Inspected	234
GIS Points	0
Customer Complaint	2
Odor Complaints	0

Description	Total
Flushing/Jetting (Feet)	255
Video Inspection (Feet)	270

Description	Total
Sanitary Sewer Spills (SSO)	0
SSO Gallons Spilled	0

Maintenance and Repair

- **Routine Tasks**
 - Weekly lift station site inspections (PMCS)
 - Added degreaser and odor control to lift stations.
- **Lift Stations**
 - Cleaned and Inspected: LS1, LS2, LS3, LS4.
 - Manhole Inspections LS16, Groveland.
 - Remove roots and debris found during manhole inspections.
 - Replaced water pump at LS3.
 - Replaced hour meter and cleaned crank case vent filter at LS15.
 - R&R radiator caps and top off fluid at LS3, LS5, LS6, LS10, LS11, LS12, LS14, and LS15.
- **Collection System**
 - Flushed/Jetted gravity sewer line areas.
 - Groveland, Bass Pond, Twin Pines Easement monthly manhole inspections.
 - Replaced batteries in flow meters at Cresthaven Dr and Yorkshire Dr.

Pictures



General Maintenance Division

Maintenance By Department

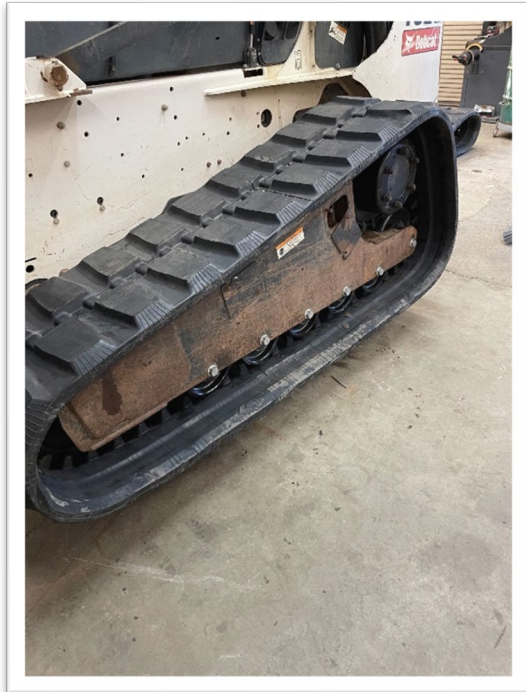
- **Operations Department**

- 2G Water Treatment Plant
- Big Creek Water Treatment Plant
 - Investigated water leak. Ongoing.
 - Cleared alarms and tested generator.
- Butler Bypass Pump Station
- AWS
 - Rented temporary generator and installed. Normal generator needs repairs made to it.
- STP
 - Sludge pump maintenance. Tighten packing on both cylinders. Cleaned out drain and channels for fresh oil.
 - Vacuum and rinse digester basin.
- Reservoir 2 – STP Pond
- Water Storage Tank 4
- Water Storage Tank 5

- **Maintenance Department**

- Equipment
 - Shop tool maintenance and cleaning.
 - Monthly Inspect and run at operating temperatures...
 - Rain for Rent, Sullair, Vactron, Cement mixer, Light Tower, STP generator, Dunn Ct Generator, AWS Generator, Standby Generator, Highlands Generator.
- Vehicles
 - 20420: R&R vacuum filters.
 - 30821: R&R tracks, rollers, idlers, rollers, drive sprockets, and one final drive motor.
 - 62330: R&R water pump and replaced broken parts.
 - 42128: Installed truck steps that were removed from 42127.
 - 52235: Set up new truck. Fabricate and install tool racks.
 - 62026: Respooled hoist cable to remove twists.
 - 52331: Changed oil, oil filter, and fuel filter. Rotated tires. Topped off fluids.
 - 70981: Alteration to rear cab area to accommodate more tools.
 - 62330: R&R rear toolbox.
- Buildings & Yard
 - General yard cleanliness.
 - Cleaned and reorganized the paint shed.
 - Vegetation management.

Pictures



Parks Division

Maintenance and Repair

- **Mary Laveroni Community Park**
 - Landscape Maintenance.

- **Ballfield & Dog Park**
 - Completed repairs to fencing around gate.

Contracted Work

Workplace Safety and Training

- Routine Safety Meetings
 - Daily Tailgate Meetings
 - Weekly Safety Meetings
 - Weekly Security Checks
 - Weekly Vehicle Inspection