



Information Provided By

O&M Manager: Luis Melchor
 Operations Supervisor: Greg Dunn
 Maintenance Supervisor: Andrew Klein
 Administration Services Technician: Renee Van Dyk

**Operations and Maintenance Report
 June 2022**

Operations Department

Wastewater Treatment Division

Influent Totals	
Total	3.53
High	.14
Low	.09
Average	.12

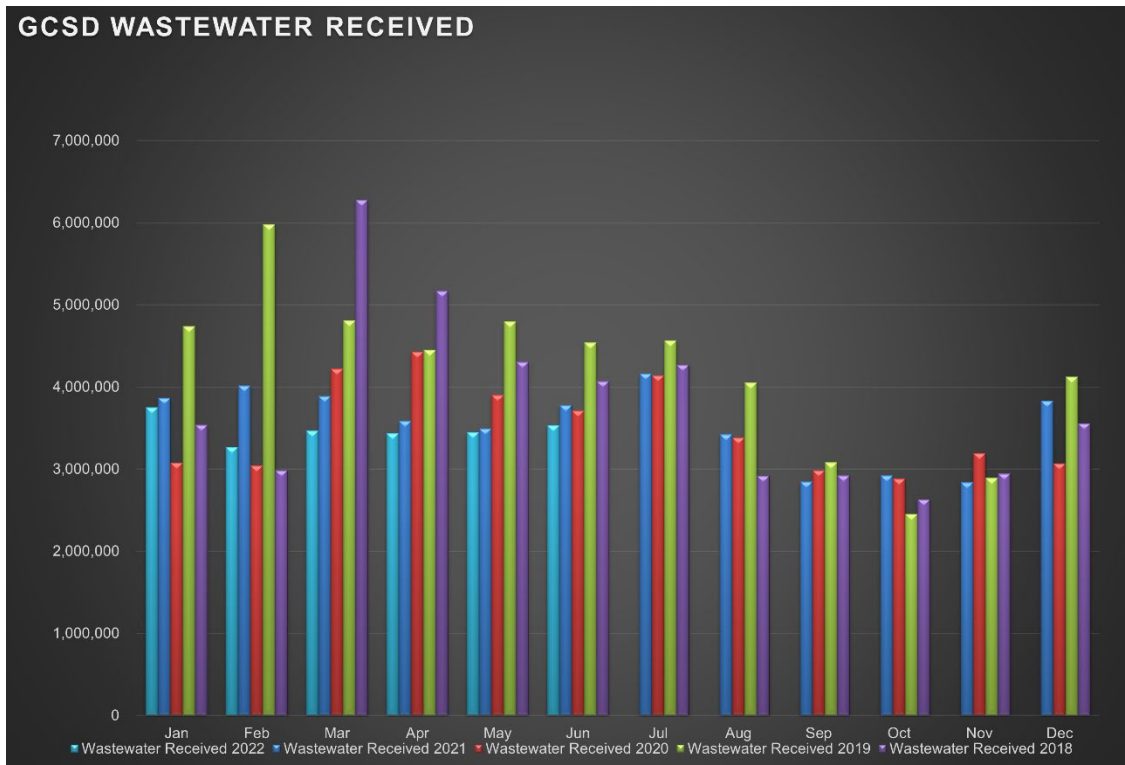
Effluent Totals	
Total	3.64
High	0.15
Low	0.1
Average	0.12

Reclamation Totals	
PML	
Spray Fields	
PML Season Total	
Spray Field Season Total	

Wasting Totals	
Total Inches	220
Total Pounds	5620
Active Accounts	1562

STP Rainfall Totals by Year During Current Month (Inches)					
Season	2022	2021	2020	2019	2018
	24.26	0.06	0.00	0.00	0.00
High	High 0.03	High 0.00	High 0.00	High 0.04	High 0.00

Charted Historical Monthly Influent Totals



Wastewater Treatment Division

Routine Tasks

- Took weekly Bac-Ts and BOD of the Chlorine Contact Chamber (CCC) and sent into Alpha Lab for testing
- Completed monthly Wastewater Report and sent to the State Water Resources Control Board
- Completed daily rounds and Lab

Water Treatment Division

Routine Tasks

- Submitted monthly Water Treatment Report to State Water Resources Control Board
- Submitted monthly Conservation Report to State Water Boards
- Performed weekly checks and calibrations on all analyzers at 2G, BC, and AWS
- Performed monthly UV calibrations at 2G and BC
- Took weekly Treatment Plant samples and sent into Alpha Lab
- Monitored/sampled Distribution Tanks as needed

Maintenance Department

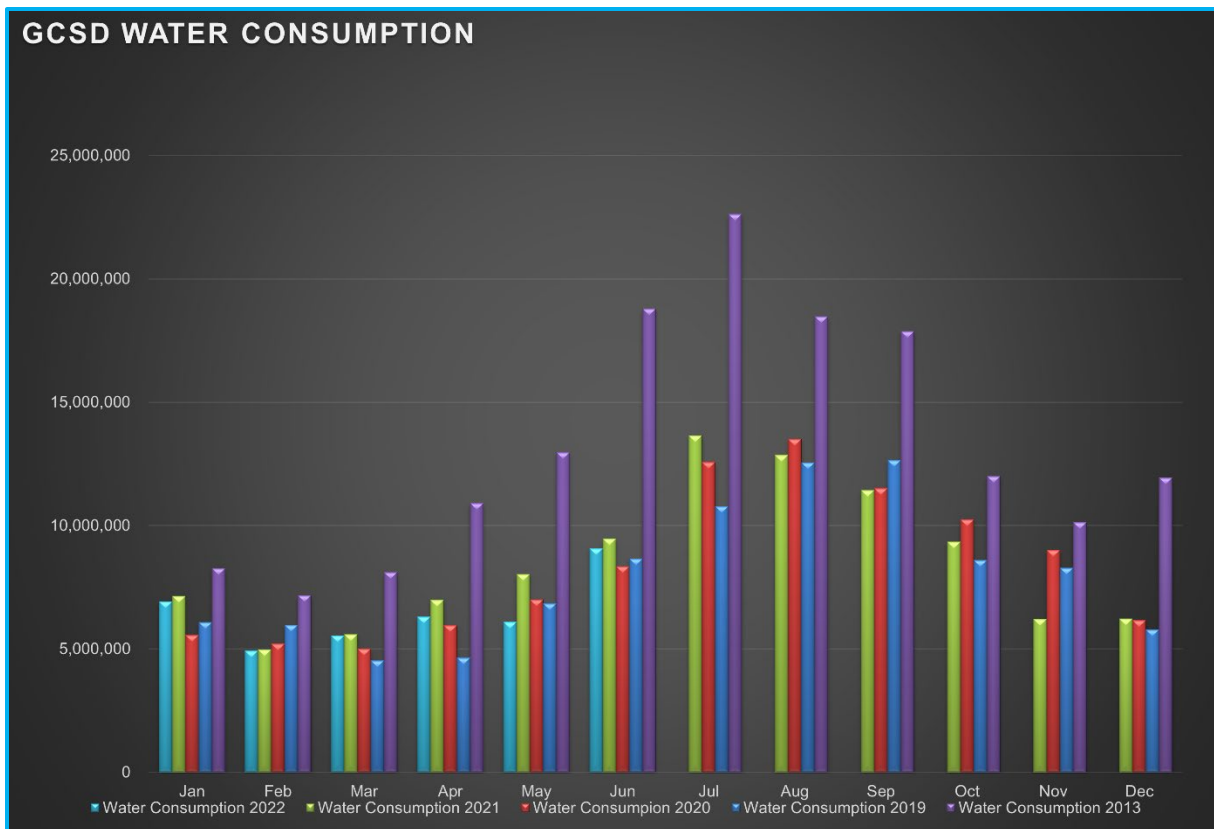
Water Distribution System Division

Meter Related Services	Total
Check / Repair Meters	0
Water Meters Installed	0
Monthly Meter Restrictions	0
Meter Changeouts	0
Tenant Final Reads	6
Re-Reads	26
Meter Turn-Offs	1
Meter Turn-Ons	3
Meter Tests	0
Total Meter Related Issues	36

Billed Consumption (Gallons)	2022	2021	2020
Residential	8,368,278	8,859,296	8,345,921
Commercial	711,937	593,274	N/A
Total	5,831,904	7,354,341	5,961,500

Active Accounts	3254
------------------------	------

Charted Historical Monthly Water Consumption



Water Distribution System Division

Maintenance and Repair Data

Description	Total
Water Main Leaks / Repairs	2
Water Service Line Leaks / Repairs	0
Fire Hydrant Repairs / Replacements	2
Number of Hydrants Flushed	8
Number of Dead-Ends Flushed	5
Water Valves Exercised	4
GIS Points	1

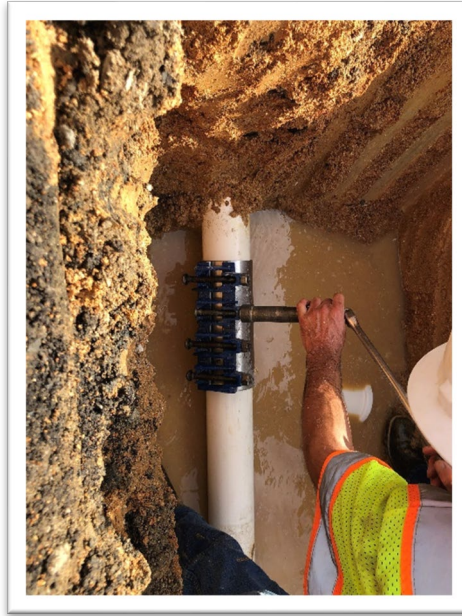
Description	Gallons
Flushing for Water Quality	5,550
Water Loss Due to Leaks / Breaks	1,250

After-Hours Calls (Hours)				
Water	Sewer	Park	Other	Total
2	16	0	0	18

Maintenance and Repair

- **Routine Tasks**
 - Read all District Water Meters
 - Customer Service Calls (Low / High Pressures, No Water, Turn-Ons / Turn-Offs, Etc.)
 - Underground Service Alert (USA) Utility Marking Program
 - Weekly Pump Station Inspections at Tank 2, Tank 4, Tank 5 (Buildings, Tanks, Motors, Pumps, Drives, Communications, Generators, and Auxiliary Equipment)
- **Tanks and Pump Stations**
 - Tank 5 base plate measurements
- **Distribution System**
 - Dead-End flushing for Units: Big Oak Flat
 - Repaired mainline leak at 11157 Scofield St, BOF
 - Repaired Fire Hydrant – GCSO Admin Building
 - Lubricated Fire Hydrant operating nut at 17401 Hwy 120
 - Repaired mainline water leak at GCSO Maintenance Shop
 - Install new trim around new roll-up door on chemical building at STP
 - Raise water meter box to grade on Mill St

Water break – 11157 Scofield St



Water break – GCSD Maintenance Shop



Wastewater Collection System Division

Description	Total
Manholes Inspected	32
GIS Points	9
Customer Complaint	1
Odor Complaints	1

Description	Total
Flushing/Jetting (Feet)	1671
Video Inspection (Feet)	850

Description	Total
Sanitary Sewer Spills (SSO)	0
SSO Gallons Spilled	0

Maintenance and Repair

- **Routine Tasks**
 - Weekly lift station site inspections
 - Added degreaser and odor control to lift stations
- **Lift Stations**
 - Cleaned: LS14, LS15, LS16
 - Weed maintenance and general site cleanup at LS11 and LS10
- **Collection System**
 - Inspected Manholes: Twin Pines Easement, Bass Pond
 - Flushed/Jetted gravity sewer line areas (See data above):
 - Reservoir 2 dam weed maintenance
 - Repair sewer lateral (Roots) on Hillcroft Dr (Unit 12).
 - Mow between spray fields and church/private residence on Ferretti Rd.
 - Treated problem grease mainlines with caustic soda.
 - Power outages on 06/24/22. Inspect and resolve generator hiccups.
 - Assist Moyle Excavation with sewer bypass from LS16 for CIP Project.
 - Encroachment Inspection: 12733 Junipero Serra Ct
 - Investigate odor complaint and treat MH with sweetener at Dunn Ct.

Parks Division

Maintenance and Repair

- **Mary Laveroni Community Park**
 - Landscape Maintenance
- **Ballfield & Dog Park**

General Maintenance Division

Maintenance By Department

- **Operations Department**

- 2G Water Treatment Plant
 - Reinstalled chlorine finish pump. Ran and inspected for proper operation.
- Big Creek Water Treatment Plant
- AWS
- STP
 - Measure E-basin aerators and begin ordering parts to build replacements.

- **Maintenance Department**

- Equipment
 - Diagnose LS13 not alarming when power fails.
 - Connected PLC to UPS relay and tested. Working properly.
 - Need further diagnosis by programmer of pump fails during power failures.
 - Diagnose LS8 over crank on generator. Found battery almost dead. Installed new battery tender and tested. Working properly.
 - LS10: Pulled pump 2 and sent to Industrial Electric for rebuild.
 - LS10: Main Power Line testing performed by PG&E. Awaiting results.
- Vehicles
 - 70981: 90 Day inspection
 - 79987: 90 Day inspection
 - 79783: 90 Day inspection
 - 39512: Greased and lubricated PTO, R & R Air Filter. Overall Inspection of Tractor
 - 38010: Pressure washed, greased and lubricated. Overall Inspection of Tractor
 - 40606: Brake replacement all 4 wheels, Repair shifter cable.
 - 40403: Replace transmission.
- Buildings & Yard
 - Fabricate and install tank guard for air cannisters at Fire Station
 - General yard cleanliness.

Contracted Work

- Service Masters
 - Site cleanup and disinfection for sewer main backup; Junipero Serra Ct
- Moyle Excavation
 - Sanitary Sewer Replacement CIP project underway
- Presidio Systems Inc
 - CCTV of sewer mains for CIP project
- Industrial Electric
 - Diagnose soft start over amperage at LS10. Determined deteriorated pump performance causing over amperage.
 - Diagnose LS7 Pump 2 fail to start alarms. Inspected relay functions. Found no faults with relay functions. May need to have programmer inspect SCADA programming.

Workplace Safety and Training

- Routine Safety Meetings
 - 1) Daily Tailgate Meetings
 - 2) Weekly Safety Meetings
 - 3) Weekly Security Checks
 - 4) Weekly Vehicle Inspection