



Information Provided By

O&M Manager: Luis Melchor
 Operations Supervisor: Stacy Billings
 Maintenance Supervisor: Andrew Klein
 Administration Services Technician: Rachel Pearlman
 Utility Billing Specialist: Meghan Atkins

**Operations and Maintenance Report
 April 2025**

Operations Department

Wastewater Treatment Division

Influent Totals	
Total	4.24
Average	0.14
High	0.23
Low	0.11

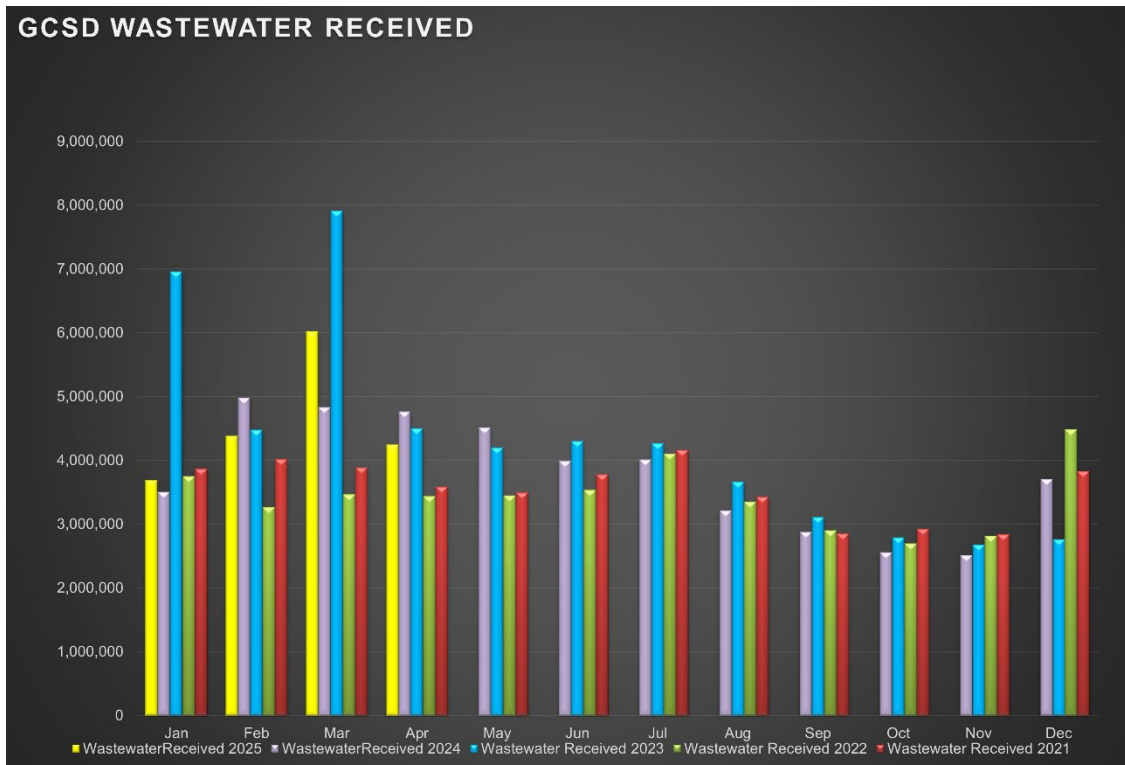
Effluent Totals	
Total	4.42
Average	0.15
High	0.23
Low	0.13

Reclamation Totals	
PML	
Spray Fields	
PML Season Total	
Spray Field Season Total	

Wasting Totals	
Total Inches	487
Total Pounds	4981
Active Accounts	1570

STP Rainfall Totals by Year During Current Month (Inches)					
Season	2025	2024	2023	2022	2021
	34.31	2.75	2.85	0.35	0.49
	High 0.97	High 1.07	High 0.35	High 0.68	0.43

Charted Historical Monthly Influent Totals



Wastewater Treatment Division

Routine Tasks

- Took weekly Bac-Ts and BOD of the Chlorine Contact Chamber (CCC) and sent into Alpha Lab for testing.
- Completed monthly Wastewater Report and sent to the State Water Resources Control Board
- Completed daily rounds and Lab.

Water Treatment Division

Routine Tasks

- Submitted monthly Water Treatment Report to State Water Resources Control Board
- Submitted monthly Conservation Report to State Water Boards
- Performed weekly checks and calibrations on all analyzers at 2G, BC, and AWS
- Performed monthly UV calibrations at 2G and BC.
- Took weekly Treatment Plant samples and sent them into Alpha Lab
- Monitored/sampled Distribution Tanks as needed.

Maintenance Department

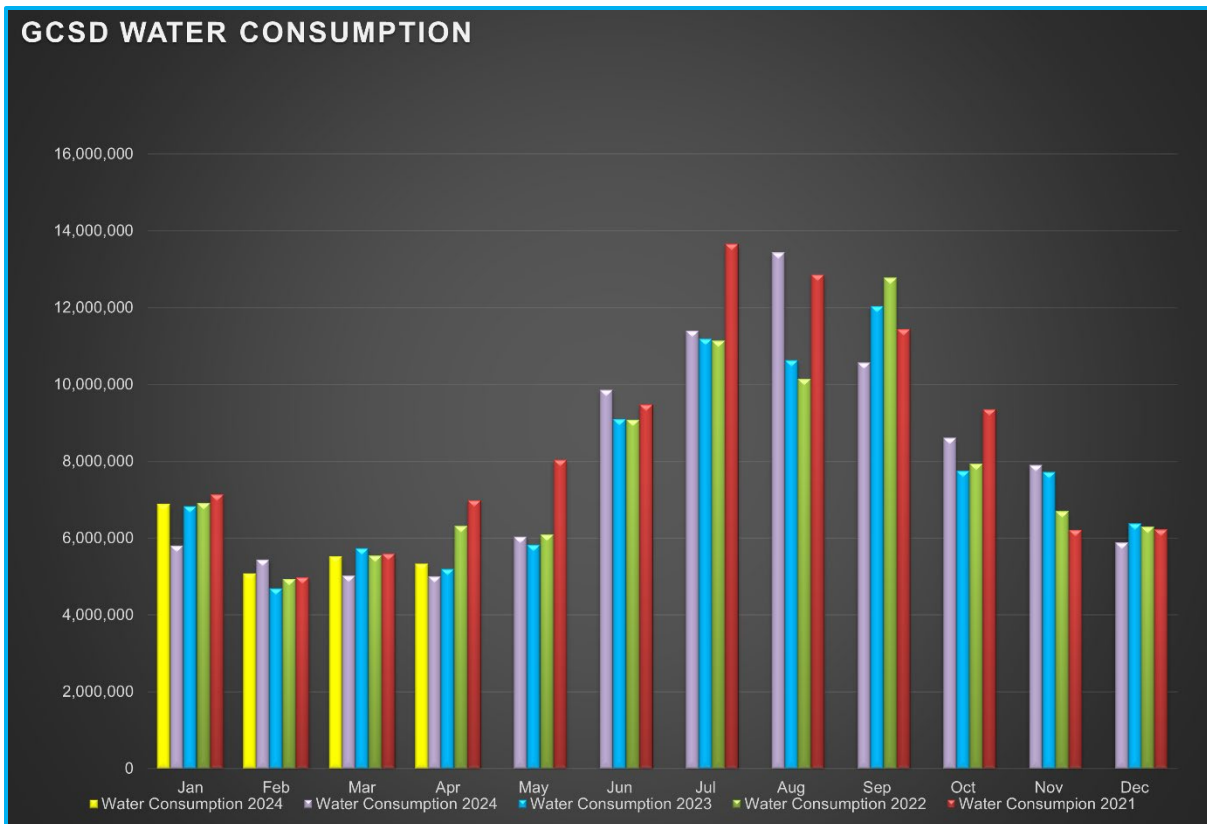
Water Distribution System Division

Meter Related Services	Total
Check / Repair Meters	11
Water Meters Installed	0
Meter Lock offs	5
Meter Changeouts	12
Tenant Final Reads	4
Re-Reads	9
Unusual Consumption	11
Meter Turn-Offs	0
Meter Turn-Ons	0
Meter Tests	0
Winterize Meter	0
Zero Read Meter Tests	0
Color/Taste/Odor/PSI Complaints	5
Total Meter Related Issues	57

Billed Consumption (Gallons)	2025	2024	2023
Residential	4,431,747	4,680,628	4,778,330
Commercial	893,512	321,027	412,448
Total	5,325,259	5,001,655	5,190,778

Active Accounts	3275
------------------------	------

Charted Historical Monthly Water Consumption



Maintenance and Repair Data

Description	Total
Water Main Leaks / Repairs	0
Water Service Line Leaks / Repairs	0
Fire Hydrant Repairs / Replacements	0
Number of Hydrants Flushed	16
Number of Dead-Ends Flushed	12
Water Valves Exercised	0
GIS Points	0

Description	Gallons
Flushing for Water Quality	13,050
Water Loss Due to Leaks / Breaks	0

After-Hours Calls (Hours)				
Water	Sewer	Park	Other	Total
7	5	0	0	12

Maintenance and Repair

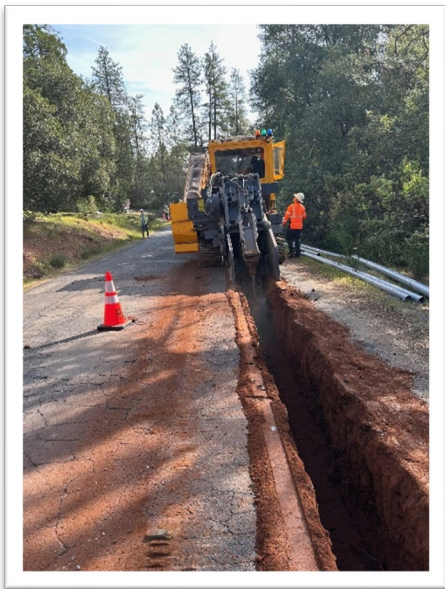
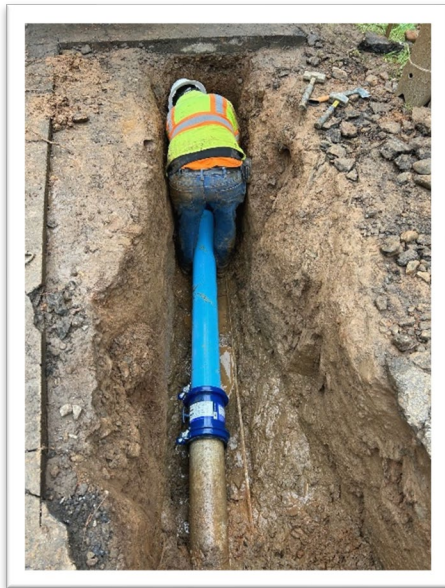
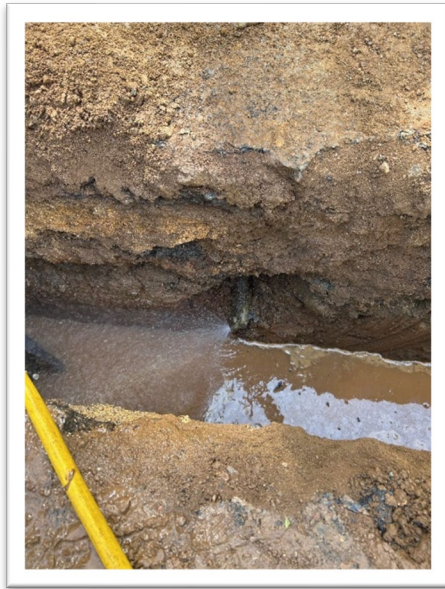
- **Routine Tasks**
 - Read all District Water Meters
 - Customer Service Calls (Low / High Pressures, No Water, Turn-Ons / Turn-Offs, Etc.)
 - Underground Service Alert (USA) Utility Marking Program
 - Weekly Pump Station Inspections at Tank 2, Tank 4, Tank 5 (Buildings, Tanks, Motors, Pumps, Drives, Communications, Generators, and Auxiliary Equipment)
 - Lock offs for non-payment.
 - Unusual Usage Meter Reads.

- **Tanks and Pump Stations**
 - Rodent control at Tank 4.
 - Rodent control at Tank 2.

- **Distribution System**
 - Dead end flushing.
 - R&R water meter box lid at 19677 Jonny Degnan Ct.
 - R&R water meter washers at 12056 Breckenridge Rd.
 - Replace hard to read various meters throughout system with Verizon meters.

Pictures

Collateral damage from PG&E undergrounding project. A broken water service line and main water line.



Wastewater Collection System Division

Description	Total
Manholes Inspected	180
GIS Points	0
Customer Complaint	0
Odor Complaints	0

Description	Total
Flushing/Jetting (Feet)	0
Video Inspection (Feet)	1493

Description	Total
Sanitary Sewer Spills (SSO)	0
SSO Gallons Spilled	0

Maintenance and Repair

- **Routine Tasks**
 - Weekly lift station site inspections (PMCS)
 - Added degreaser and odor control to lift stations.

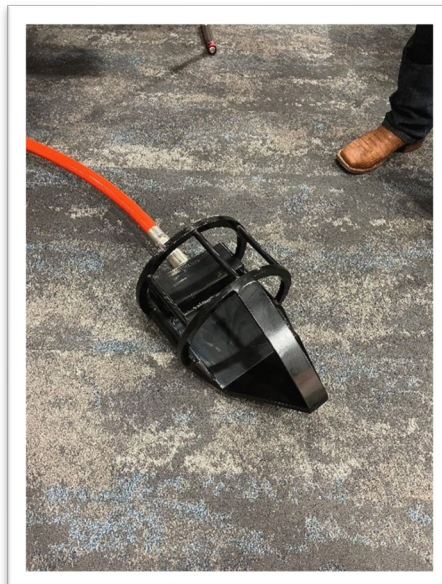
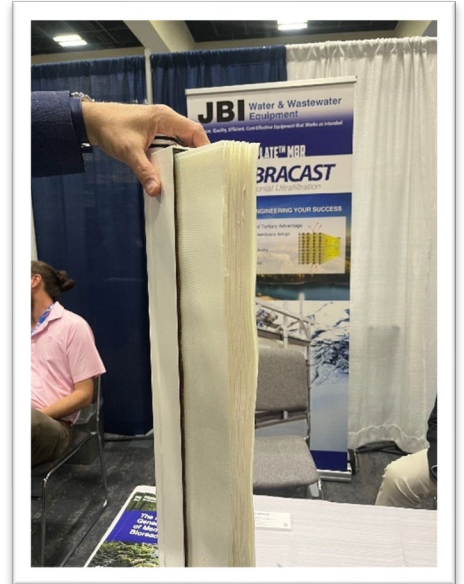
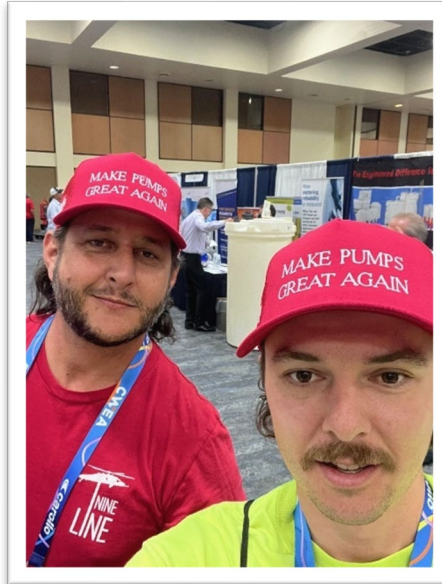
- **Lift Stations**
 - Manhole Inspections: LS3, LS4, LS5.
 - Lift Station cleaning: LS5, LS6, LS7, LS8.
 - Remove roots and debris found during manhole inspections.
 - Maintain odor control chemical dosing pumps at LS6, LS8, LS11, LS13.
 - CCTV and USA mark outs for PG&E under grounding project.
 - Replaced electrical lug connections at LS6.

- **Collection System**
 - Flushed/Jetted gravity sewer line areas.
 - Tenaya to STP, Bass Pond, monthly manhole inspections.
 - Camera sewer main to locate and mark at U3/L322.

- **Sewer Treatment Plant**
 - Landscape/remove dirt and debris from reservoir 2 dam base.
 - Rodent control.
 - Cleaned flume from debris/dirt.

Pictures

A Couple of our Technicians went to a California Water Environment Association conference and participated in continuing education and discovered new technology at the CWEA trade show.



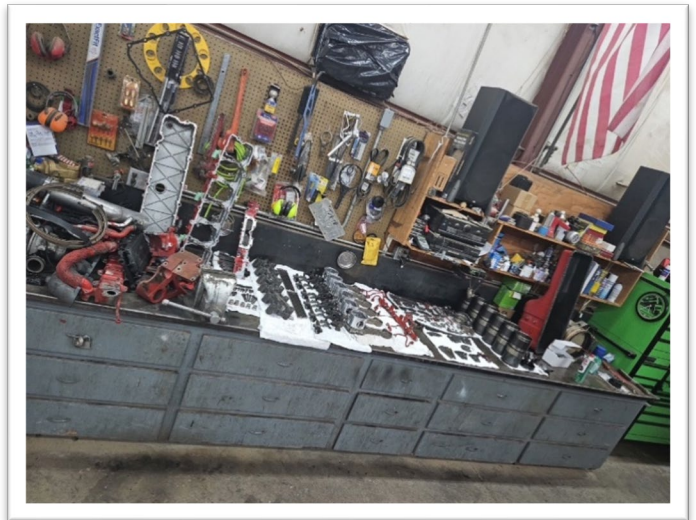
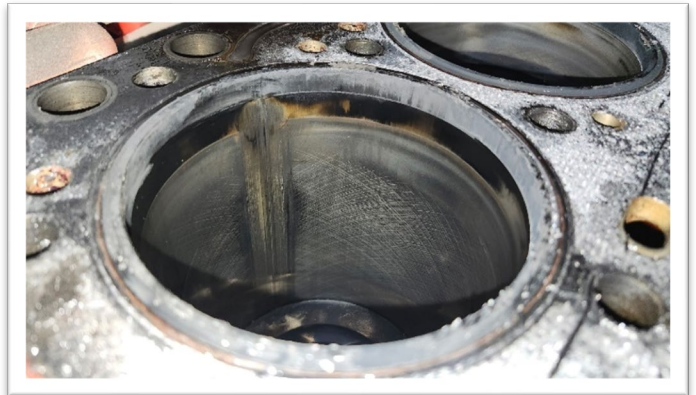
General Maintenance Division

Maintenance By Department

- **Operations Department**
 - 2G Water Treatment Plant
 - LED lighting retrofit.
 - Assembled metal desk and attached to wall.
 - Relocated wye strainers.
 - Rodent control.
 - Big Creek Water Treatment Plant
 - LED lighting retrofit.
 - Butler Bypass Pump Station
 - AWS
 - STP
 - Repaired leak on OSG.
 - Exercise and close stuck air valve to isolate air leak.
- **Maintenance Department**
 - Equipment
 - Shop maintenance and cleaning.
 - Monthly Inspect and run at operating temperatures...
 - Rain for Rent, Sullair, Vactron, Cement mixer, Light Tower, STP generator, Dunn Ct Generator, AWS Generator, Standby Generator, Highlands Generator.
 - Vehicles
 - 42127: LOF, rotate tires, and clean.
 - 42128: LOF, rotate tires, and clean
 - 52229: Fabricate new brackets for work lights.
 - 52235: R&R fuel pump on diesel transfer tank.
 - 51618: R&R fuel pump on diesel transfer tank.
 - 50810: Removed plow for season.
 - 60523: 90 Day Inspection.
 - 60524: 90 Day Inspection. R&R water pump. Order new belt.
 - 62330: 90 Day Inspection. Service filters and lube.
 - 62333: 90 Day Inspection.
 - 70087: Repaired water pump lines and fittings.
 - 70781: Engine In-frame Rebuild. Diagnose no start, R&R starter motor.
 - Buildings & Yard
 - General yard cleanliness.
 - Vegetation management.

Pictures

Engine 781 In-frame rebuild.



Parks Division

Maintenance and Repair

- **Mary Laveroni Community Park**
 - Landscape Maintenance.
 - Completed install of new ML Park Sign.



- **Ballfield & Dog Park**
 - Landscape Maintenance.

Contracted Work

- **Njirich Construction**
 - Water main extension – Harper Rd.
 - Tank 5 site work for new tank.

Workplace Safety and Training

- **Routine Safety Meetings**
 - Daily Tailgate Meetings
 - Weekly Safety Meetings
 - Weekly Security Checks
- Weekly Vehicle Inspection