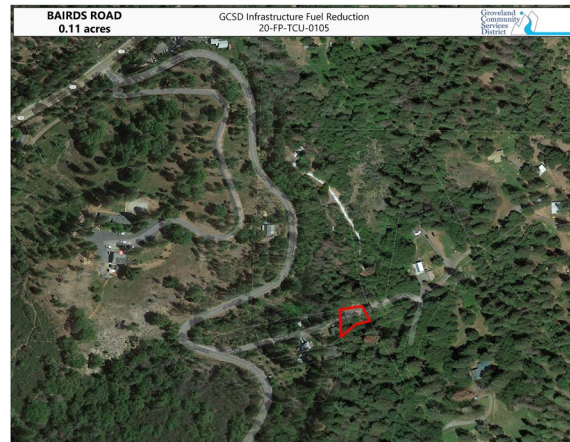
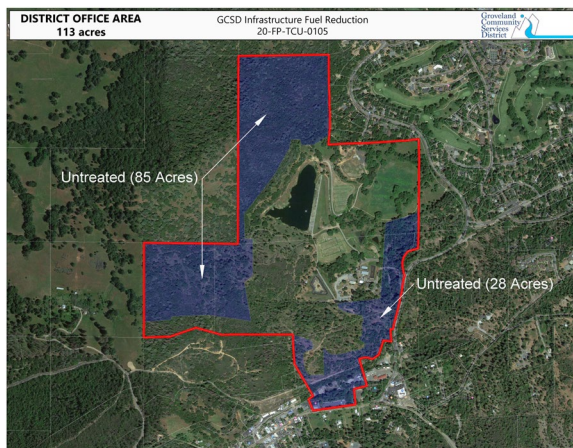
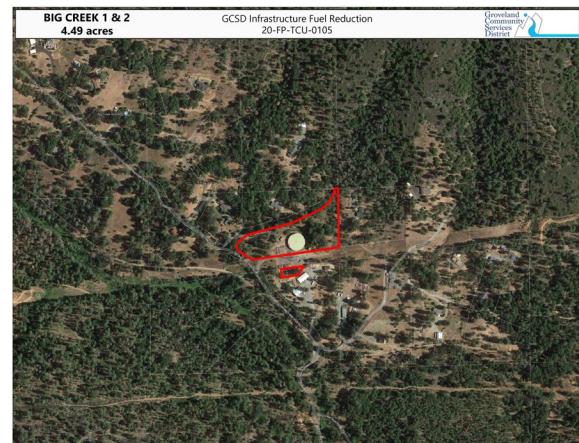


Project Name: GCSD Infrastructure Fuel Reduction
Date: September 13, 2021
Funding: \$405,462 (California Climate Investment Grant awarded 9/8/2021)
Primary Benefits: Protect the communities of Big Oak Flat, Pine Mountain Lake and Groveland, as well as GCSD administrative office, critical water and sewer infrastructure from a large, damaging fire coming from the South Fork of the Tuolumne River Canyon



The proposed GCSD Infrastructure Fuel Reduction in totality is approximately 119 acres in size and located within property owned by the Groveland Community Services District. Private contractors utilizing handcrews and/or operating masticators will create a shaded fuel break by hand cutting or masticating surface and latter fuels in the understory of the GCSD properties. A large portion of the fuel reduction will allow the Rim Truck Trail West Fuel Break and Jones Hill Fuel Break to be segment by segment constructed encompassing the Community of Groveland and the GCSD. The proposed fuel reduction will protect the communities of Big Oak Flat. Pine Mountain Lake and Groveland from a large, damaging fire coming from the South Fork of the Tuolumne River Canyon. The overall project area is within the GCSD boundaries and State Responsibility Area (SRA) in Groveland.





The expected outcome is to have continuous fuel reductions strategically placed in locations within a greater area of fuel breaks overall, at least in terms of protecting the Groveland community. This will assist in controlling large fires primarily where they provide additional access for firefighting activities, ultimately increasing initial attack success, reducing the number of extended or major wildland fires. This fuel reduction will serve to allow firefighters to work safely in the area; to change fire direction; to drop fire to the ground; and to stop the spread of wildfire under adverse fire conditions. The width of treatment will be determined utilizing such factors as fuel loads, topography, predominant winds, values at risk and fire behavior modeling. Mitigating fire risk to the communities and protecting critical water and wastewater infrastructure is a priority of the District.

Another key desirable outcome of this fuel reduction project is protecting the GCSO water and sewage treatment facility. This critical infrastructure provides safe drinking water and fire protection for the Groveland, Big Oak Flat and PML communities. Additionally, Groveland Community Resilience Center and GCSO fire station are located in the project area.