



Information Provided By

O&M Manager: Luis Melchor
 Operations Supervisor: Greg Dunn
 Maintenance Supervisor: Andrew Klein
 Administration Services Technician: Rachel Pearlman

**Operations and Maintenance Report
 July 2023**

Operations Department

Wastewater Treatment Division

Influent Totals	
Total	4.27
Average	0.14
High	0.17
Low	0.10

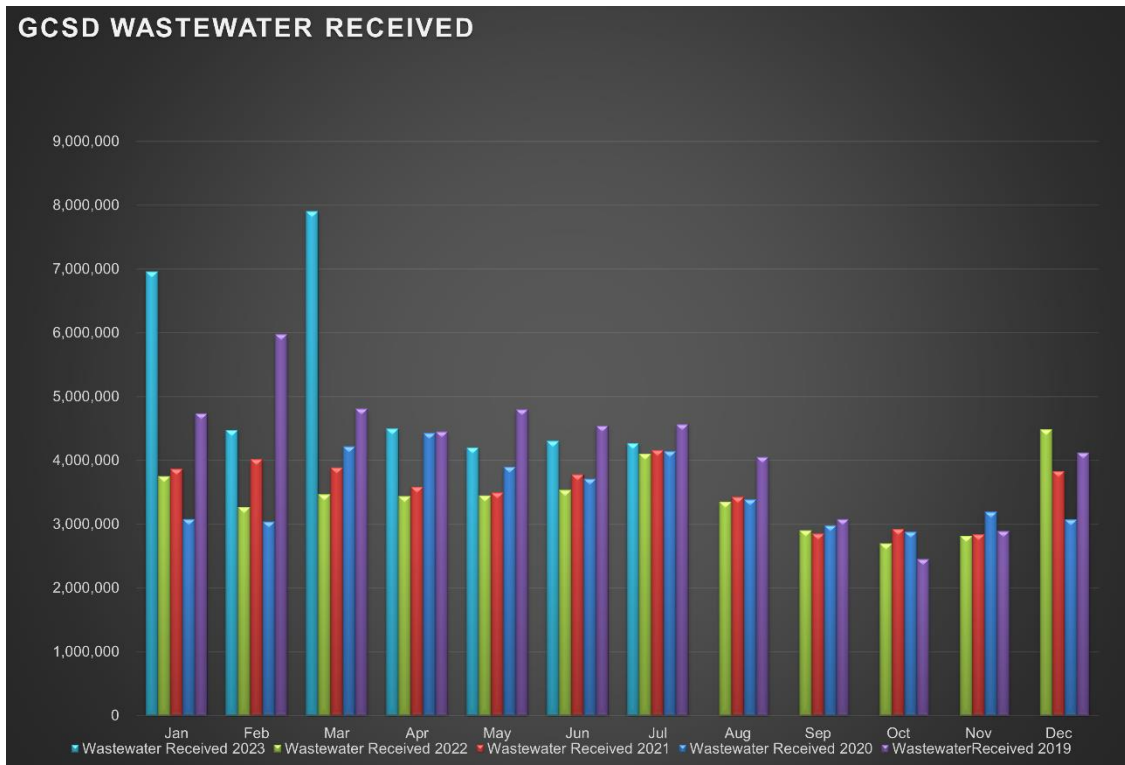
Effluent Totals	
Total	4.35
Average	0.14
High	0.18
Low	0.11

Reclamation Totals	
PML	
Spray Fields	
PML Season Total	
Spray Field Season Total	

Wasting Totals	
Total Inches	167
Total Pounds	5348
Active Accounts	1565

STP Rainfall Totals by Year During Current Month (Inches)					
Season	2023	2022	2021	2020	2019
0.00	0.00	0.00	0.00	0.00	0.02
	High 0.00	High 0.00	High 0.00	High 0.00	High 0.02

Charted Historical Monthly Influent Totals



Wastewater Treatment Division

Routine Tasks

- Took weekly Bac-Ts and BOD of the Chlorine Contact Chamber (CCC) and sent into Alpha Lab for testing.
- Completed monthly Wastewater Report and sent to the State Water Resources Control Board
- Completed daily rounds and Lab.

Water Treatment Division

Routine Tasks

- Submitted monthly Water Treatment Report to State Water Resources Control Board
- Submitted monthly Conservation Report to State Water Boards
- Performed weekly checks and calibrations on all analyzers at 2G, BC, and AWS
- Performed monthly UV calibrations at 2G and BC.
- Took weekly Treatment Plant samples and sent them into Alpha Lab
- Monitored/sampled Distribution Tanks as needed.

Maintenance Department

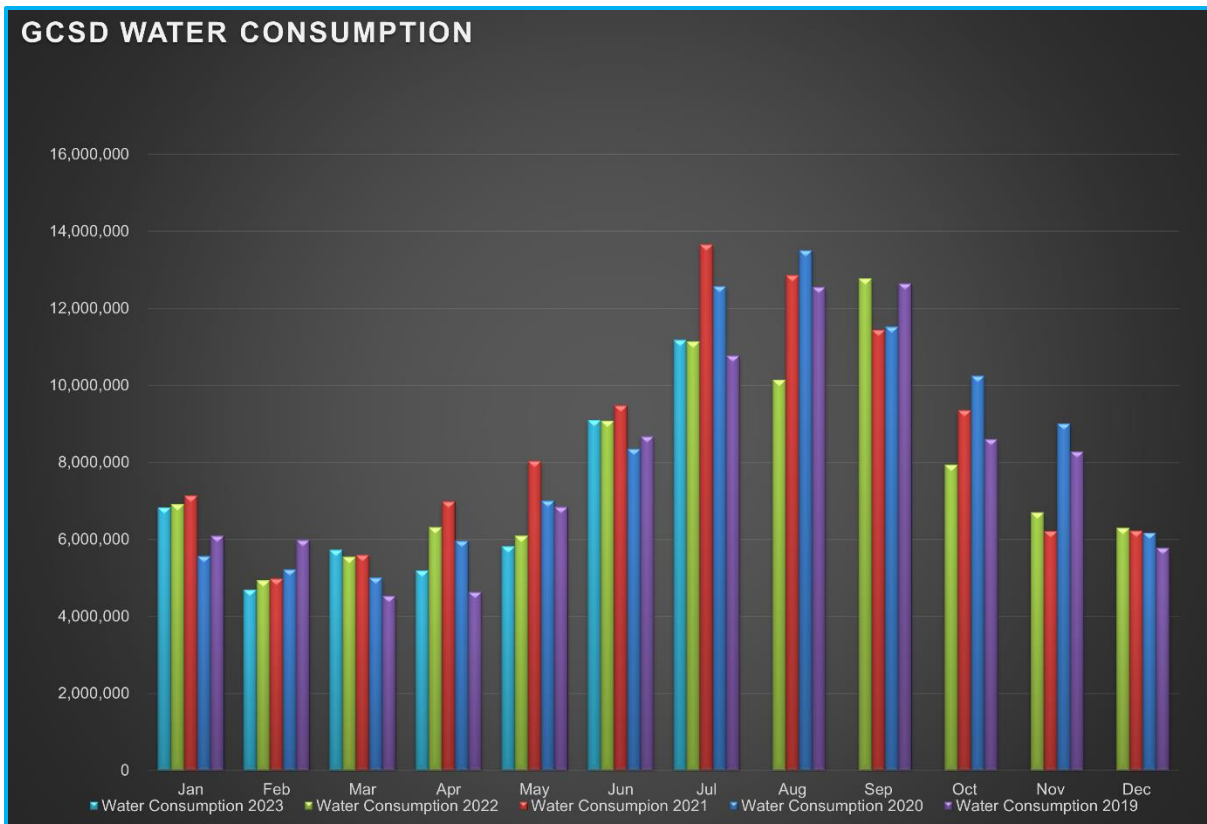
Water Distribution System Division

Meter Related Services	Total
Check / Repair Meters	2
Water Meters Installed	4
Monthly Meter Restrictions	0
Meter Lock offs	0
Meter Changeouts	3
Tenant Final Reads	1
Re-Reads	18
Meter Turn-Offs	4
Meter Turn-Ons	3
Meter Tests	88
Winterize Meter	0
Color/Taste/Odor Complaints	3
Total Meter Related Issues	123

Billed Consumption (Gallons)	2023	2022	2021
Residential	10,487,154	10,302,426	12,613,466
Commercial	690,486	831,216	1,007,603
Total	11,177,640	11,133,642	13,621,069

Active Accounts	3271
------------------------	------

Charted Historical Monthly Water Consumption



Maintenance and Repair Data

Description	Total
Water Main Leaks / Repairs	0
Water Service Line Leaks / Repairs	0
Fire Hydrant Repairs / Replacements	0
Number of Hydrants Flushed	11
Number of Dead-Ends Flushed	9
Water Valves Exercised	3
GIS Points	0

Description	Gallons
Flushing for Water Quality	19,100
Water Loss Due to Leaks / Breaks	0

After-Hours Calls (Hours)				
Water	Sewer	Park	Other	Total
5	25	6	0	36

Maintenance and Repair

- **Routine Tasks**
 - Read all District Water Meters
 - Customer Service Calls (Low / High Pressures, No Water, Turn-Ons / Turn-Offs, Etc.)
 - Underground Service Alert (USA) Utility Marking Program
 - Weekly Pump Station Inspections at Tank 2, Tank 4, Tank 5 (Buildings, Tanks, Motors, Pumps, Drives, Communications, Generators, and Auxiliary Equipment)
 - Lock offs for non-payment.

- **Tanks and Pump Stations**

- **Distribution System**
 - Water Distribution System Flushing
 - Water Meter Testing
 - Repair leaking water service line at 18758 Foote St
 - Repair hydrant stem shaft at 19740 Old Highway 120
 - Assist property owner with leak investigation at 20967 Hemlock St
 - Upgrade service line and install water meter for new construction at 13323 Mule Ct

Pictures

Wastewater Collection System Division

Description	Total
Manholes Inspected	192
GIS Points	0
Customer Complaint	9
Odor Complaints	1

Description	Total
Flushing/Jetting (Feet)	1780
Video Inspection (Feet)	457

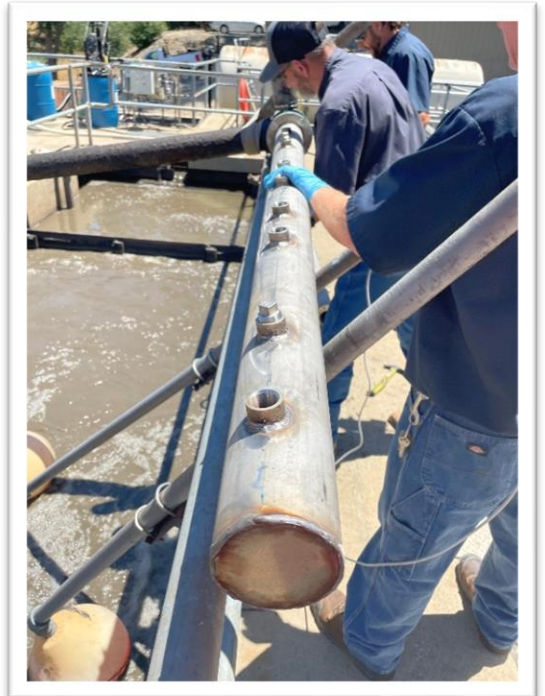
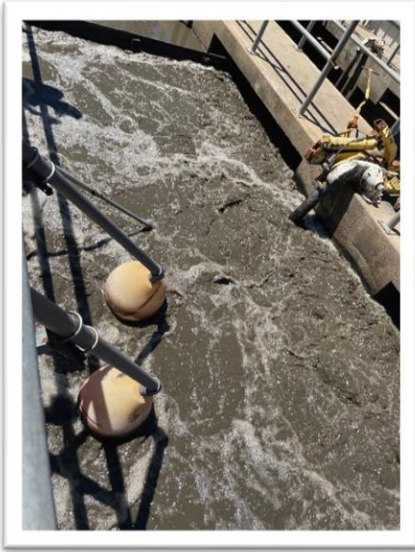
Description	Total
Sanitary Sewer Spills (SSO)	1
SSO Gallons Spilled	83.7

Maintenance and Repair

- **Routine Tasks**
 - Weekly lift station site inspections (PMCS)
 - Added degreaser and odor control to lift stations.
- **Lift Stations**
 - Cleaned and Inspected: LS8, LS9, LS10, LS11
 - Manhole Inspections LS16.
 - Replace pressure transducer at LS5.
 - Repaired LS13, Pump 1. Pump not priming properly.
- **Collection System**
 - Flushed/Jetted gravity sewer line areas.
 - Groveland, Bass Pond, Twin Pines Easement Manhole inspections.
 - Install sewer lateral connection for new construction at 13323 Mule Ct
 - Sewer lateral inspection 13510 Clements Rd.
 - Sewer lateral repair at 20606 Longview St.
 - Remove root ball from manhole at 19675 Pleasant View Dr

Pictures

Wastewater Treatment Plant – Aerator Diffuser Installation



Parks Division

Maintenance and Repair

- **Mary Laveroni Community Park**
 - Landscape Maintenance
 - Movies in the park.
 - Daily trash and bathroom maintenance
 - Remove dead pine tree at lower park.
- **Ballfield & Dog Park**
 - Apply weed killer to baseball infield.

General Maintenance Division

Maintenance By Department

- **Operations Department**
 - 2G Water Treatment Plant
 - Big Creek Water Treatment Plant
 - Installed replacement fan in UV room.
 - Installed new surge valve.
 - Installed new flow meters.
 - AWS
 - STP
 - Installed aerator diffusers.
- **Maintenance Department**
 - Equipment
 - Shop tool maintenance and cleaning.
 - Monthly Inspect and run at operating temperatures...
 - Rain for Rent, Sullair, Vactron, Cement mixer, Light Tower, STP generator, Dunn Ct Generator, AWS Generator, Standby Generator, Highlands Generator.

Vehicles

- 60523: Replaced vac truck PTO switch.
- 62333: Install spill boards.
- 52331: Shorten rear lumber rack and rewire hoist and lights.
- 42128: Install toolboxes and headache rack on truck bed.
- 62330: Warranty repairs at dealer shop.
- 60524: Repaired hose reel guide.

- Buildings & Yard
 - General yard cleanliness.
 - Vegetation management.

Contracted Work

- Moyle Excavation
 - Sewer Mainline replacement – ATH Brewery, PML Hardware, and Upper Skyridge
- Day Generator Service
 - Install Automatic Transfer Switches at LS13 and Highlands Pump Station

Workplace Safety and Training

- Routine Safety Meetings
 - Daily Tailgate Meetings
 - Weekly Safety Meetings
 - Weekly Security Checks
 - Weekly Vehicle Inspection