

**Operations and Maintenance Report  
November 2023**

**Operations Department**

**Wastewater Treatment Division**

Influent Totals	
<b>Total</b>	2.68
<b>Average</b>	0.09
<b>High</b>	0.14
<b>Low</b>	0.06

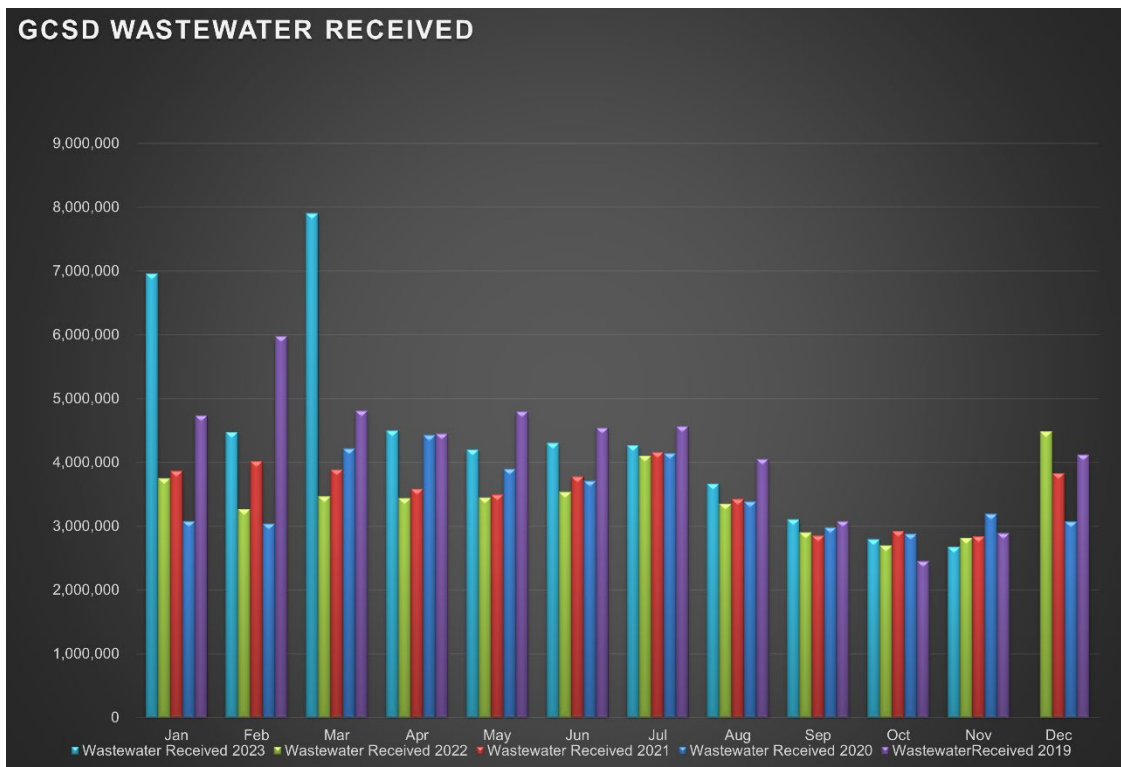
Effluent Totals	
<b>Total</b>	2.82
<b>Average</b>	0.09
<b>High</b>	0.15
<b>Low</b>	0.07

Reclamation Totals	
<b>PML</b>	
<b>Spray Fields</b>	
<b>PML Season Total</b>	
<b>Spray Field Season Total</b>	

Wasting Totals	
Total Inches	124
Total Pounds	2665
<b>Active Accounts</b>	1568

STP Rainfall Totals by Year During Current Month (Inches)					
Season	2023	2022	2021	2020	2019
	3.32	1.78	3.32	0.68	2.01
	High 0.69	High 1.38	High 0.57	High 0.70	High 0.81

**Charted Historical Monthly Influent Totals**



## **Wastewater Treatment Division**

### **Routine Tasks**

- Took weekly Bac-Ts and BOD of the Chlorine Contact Chamber (CCC) and sent into Alpha Lab for testing.
- Completed monthly Wastewater Report and sent to the State Water Resources Control Board
- Completed daily rounds and Lab.

## **Water Treatment Division**

### **Routine Tasks**

- Submitted monthly Water Treatment Report to State Water Resources Control Board
- Submitted monthly Conservation Report to State Water Boards
- Performed weekly checks and calibrations on all analyzers at 2G, BC, and AWS
- Performed monthly UV calibrations at 2G and BC.
- Took weekly Treatment Plant samples and sent them into Alpha Lab
- Monitored/sampled Distribution Tanks as needed.

## Maintenance Department

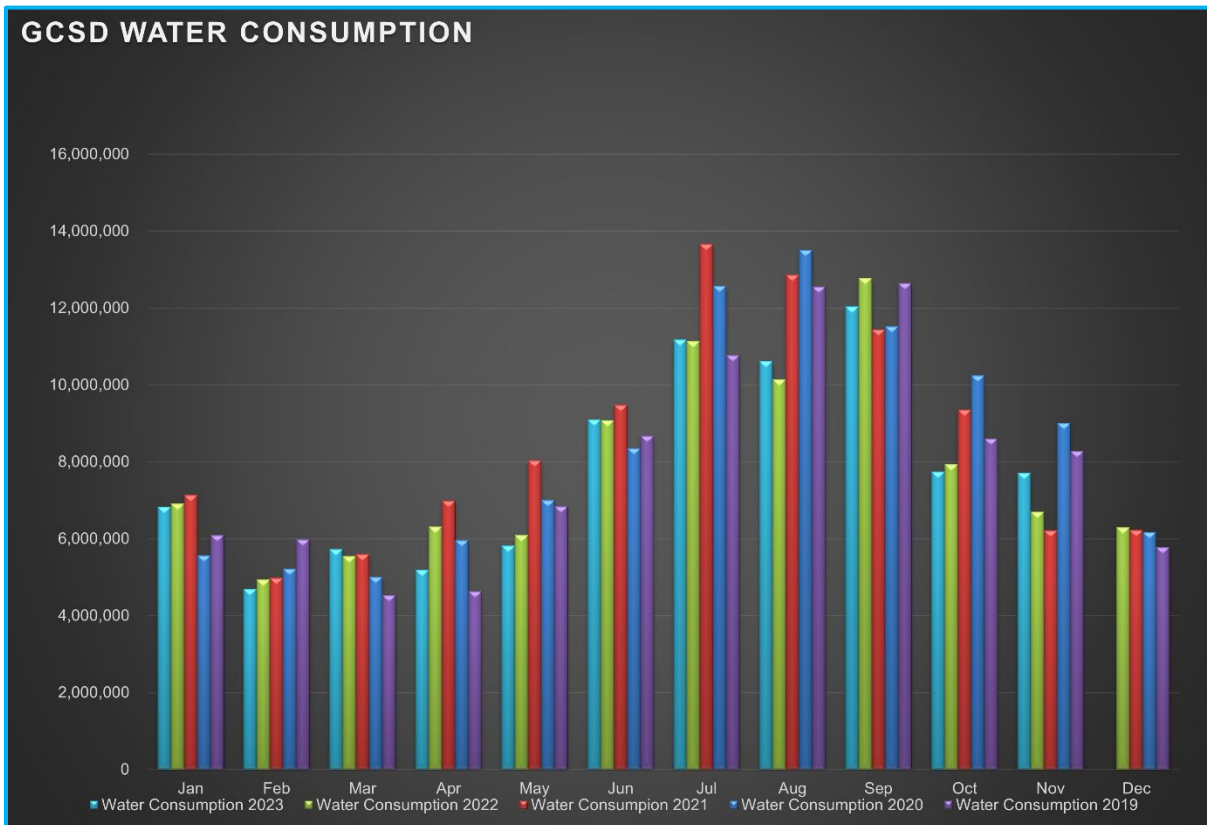
### Water Distribution System Division

Meter Related Services	Total
Check / Repair Meters	11
Water Meters Installed	0
Monthly Meter Restrictions	0
Meter Lock offs	14
Meter Changeouts	1
Tenant Final Reads	2
Re-Reads	23
Meter Turn-Offs	3
Meter Turn-Ons	3
Meter Tests	0
Winterize Meter	0
Color/Taste/Odor/PSI Complaints	0
<b>Total Meter Related Issues</b>	<b>57</b>

Billed Consumption (Gallons)	2023	2022	2021
Residential	7,172,514	6,695,922	5,771,411
Commercial	542,007	242,943	438,615
<b>Total</b>	<b>7,714,521</b>	<b>6,938,865</b>	<b>6,210,026</b>

<b>Active Accounts</b>	3286
------------------------	------

### Charted Historical Monthly Water Consumption



**Maintenance and Repair Data**

Description	Total
Water Main Leaks / Repairs	0
Water Service Line Leaks / Repairs	2
Fire Hydrant Repairs / Replacements	1
Number of Hydrants Flushed	21
Number of Dead-Ends Flushed	0
Water Valves Exercised	0
GIS Points	0

Description	Gallons
Flushing for Water Quality	53,100
Water Loss Due to Leaks / Breaks	18,200

After-Hours Calls (Hours)				
Water	Sewer	Park	Other	Total
4	7	0	0	11

**Maintenance and Repair**

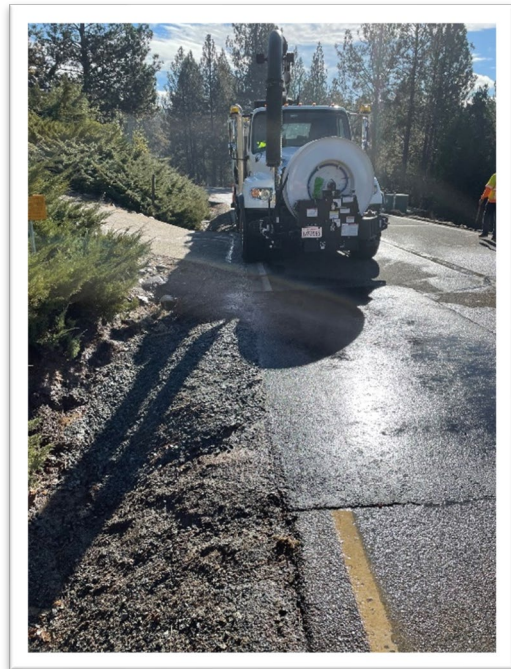
- **Routine Tasks**
  - Read all District Water Meters
  - Customer Service Calls (Low / High Pressures, No Water, Turn-Ons / Turn-Offs, Etc.)
  - Underground Service Alert (USA) Utility Marking Program
  - Weekly Pump Station Inspections at Tank 2, Tank 4, Tank 5 (Buildings, Tanks, Motors, Pumps, Drives, Communications, Generators, and Auxiliary Equipment)
  - Lock offs for non-payment.
  
- **Tanks and Pump Stations**
  
- **Distribution System**
  - Repaired leaking meter washers at 19645 Golden Rock Cir.
  - Repaired leaking meter washers at 13126 Mokelumne Cir.
  - Repaired water service line leak at 20812 Mckinley Way.
  - Repair hydrant breakaway on at fire hydrant at 19635 Chamberlain Ct.
  - Replaced leaking pressure regulator valve at 11239 Wards Ferry Rd.
  - Dead end flushing Units 13 and Merrill Rd areas.
  - Water meter upgrade 18793 Foote St.

**Water Service Line Repairs**

**Tower Peak Ct – November 5, 2023**



**Pine Mountain Dr. – November 15, 2023**





## Wastewater Collection System Division

Description	Total
Manholes Inspected	342
GIS Points	0
Customer Complaint	1
Odor Complaints	1

Description	Total
Flushing/Jetting (Feet)	0
Video Inspection (Feet)	530

Description	Total
Sanitary Sewer Spills (SSO)	0
SSO Gallons Spilled	0

## Maintenance and Repair

- **Routine Tasks**
  - Weekly lift station site inspections (PMCS)
  - Added degreaser and odor control to lift stations.
  
- **Lift Stations**
  - Cleaned and Inspected: LS12, LS11, LS10, LS9.
  - Manhole Inspections LS13 and LS5.
  - LS7 hard station reboot to clear generator alarm (Run too long).
  - Replaced pressure transducer at LS10.
  - Replaced pressure transducer at LS15.
  
- **Collection System**
  - Flushed/Jetted gravity sewer line areas.
  - Groveland, Bass Pond, Twin Pines Easement monthly manhole inspections.
  - Raise manhole frame and cover on State Hwy 120.
  - Replace manhole frame and cover on Black St.
  - Root extraction in manholes at 20460 Rock Canyon Dr and 20599 Nob Hill Cir, 20880 Elderberry Way, and Twin Pines easement.

## Pictures

### Drying Bed Rehabilitation at WWTP



## General Maintenance Division

### Maintenance By Department

- **Operations Department**

- 2G Water Treatment Plant
- Big Creek Water Treatment Plant
- AWS
- STP
  - Rehabilitated upper solids drying bed.
  - Repaired failed drive hub shaft bearing on headworks conveyer. Fabricated jig to orient bearing on shaft. Replaced drive belt.
  - Repaired leaking recycled water valve.
- Reservoir 2 – STP Pond
- Water Storage Tank 4
- Water Storage Tank 5

- **Maintenance Department**

- Equipment
  - Shop tool maintenance and cleaning.
  - Serviced Mechanic shop air compressor.
  - Service fire house generator.
  - Monthly Inspect and run at operating temperatures...
    - Rain for Rent, Sullair, Vactron, Cement mixer, Light Tower, STP generator, Dunn Ct Generator, AWS Generator, Standby Generator, Highlands Generator.

#### Vehicles

- 50415: R&R heater core, high pressure port, and fan speed resistor.
- 52229: R&R Tires.
- 20420: R&R stator, flywheel, and regulator. Replaced spark plugs and cleaned carburetor.
- 62330: 90 Day Inspection.
- 60524: 90 Day Inspection.
- 60523: 90 Day Inspection.
- 62333/12210: 90 Day Inspection.
- 79783: 90 Day Inspection.
- 70981: 90 Day Inspection, repaired auxiliary pump primer wiring.
- 70087: 90 Day Inspection.
- 41820: Serviced oil, filters, and rotated tires.
- 52229: R&R Tires.
- 62330: Diagnose CAN failures and reset.

- Buildings & Yard
  - General yard cleanliness.
  - Vegetation management.

## Parks Division

### Maintenance and Repair

- **Mary Laveroni Community Park**
  - Landscape Maintenance.
  - Remove and store sunshades over stage area.
  
- **Ballfield & Dog Park**

### Contracted Work

- **Industrial Electric**
  - Waiting on additional parts to complete repair at AWS generator

## Workplace Safety and Training

- Routine Safety Meetings
  - Daily Tailgate Meetings
  - Weekly Safety Meetings
  - Weekly Security Checks
  - Weekly Vehicle Inspection



Three employees were able to attend California Water Environment Association Northern Safety Day in Woodland, CA. This is an annual event that features multiple training sessions and a vendor fair.